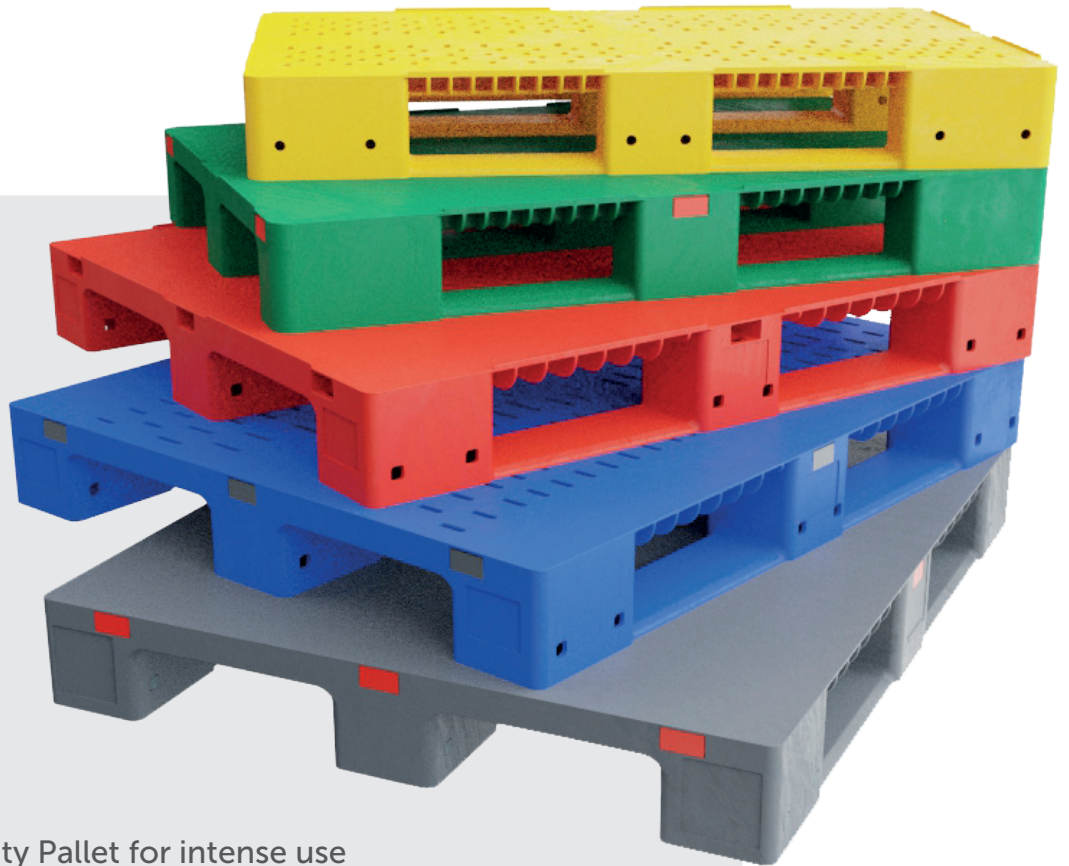









Superior handling & storage solutions

MV 800  
MV 1000



-  Heavy Duty Pallet for intense use
-  3 integral runners
-  Fits automated logistics system
-  Tailor Made Solutions
-  Fully Recyclable



THE STRONG & COLORFUL PALLET

## DOLAV MV Pallets

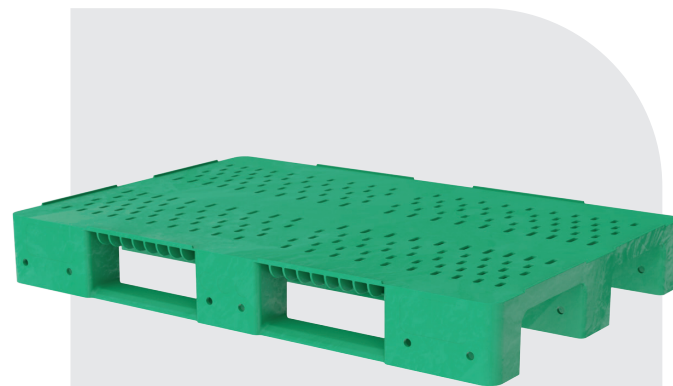
Dolav MV pallet series is the perfect solution and ideal for intensive logistic use.

Made of high-quality plastic it is an all-rounder in day-to-day service and suitable for heavy load storage and worldwide exports.

Being available in several standard colors the Dolav MV pallet can be your colorful pallet solution.



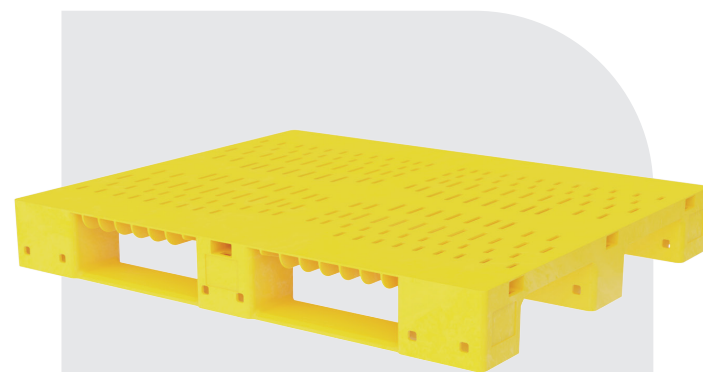
MV 800 Solid



MV 800 Perforated



MV 1000 Solid



MV 1000 Perforated



Excellent racking performance



Strong and colorful



Fully recyclable



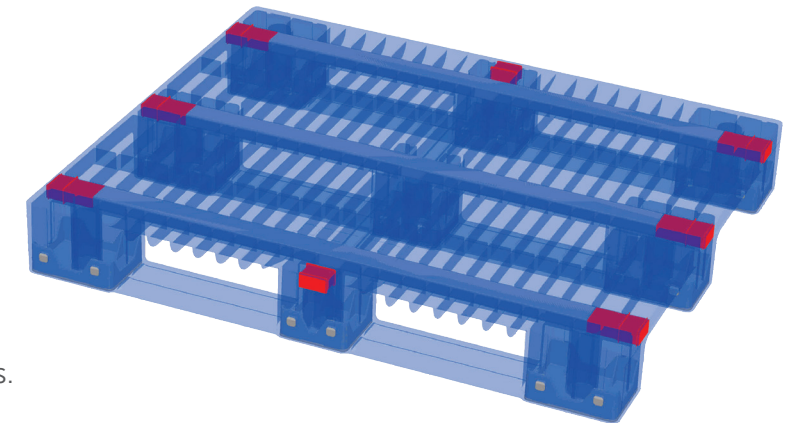
Long life span

## Reinforced Version

Heavy duty reinforced pallets for Racking systems.

This sturdy pallet is designed for heavy-duty use with reinforcements to suit up to 2000 KG, in RACKING systems.

With steel reinforcements this pallet is also ideal for use in high-bay warehouses.



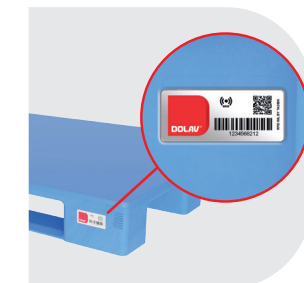
## Available Options

### Foot plugs



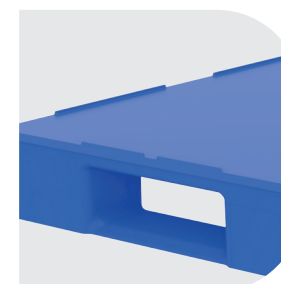
Special foot design, gives us excellent performance. Plugs seal the foot area.

### RFID-IML



Smarter and efficient stock management

### Outer safety rim



Optional safety outer rim along the edge of the pallet.

### Colors



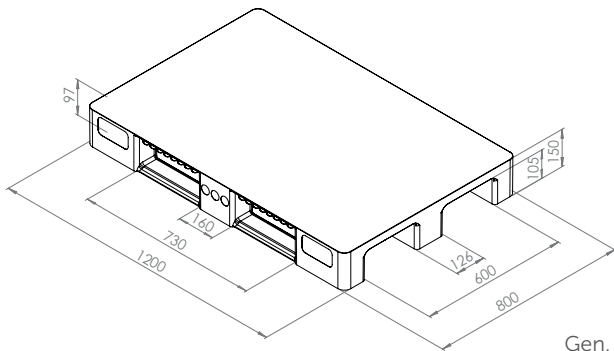
### Logo options



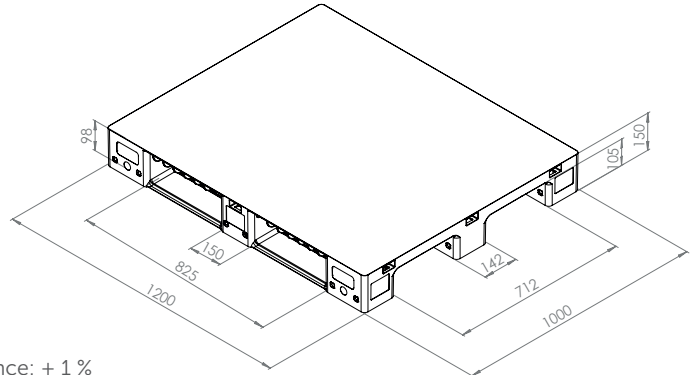
The company name, logo and sequential numbers can be hot stamped onto the Dolav for easy identification.

# Technical Data

MV-800



MV-1000



Gen. Tolerance:  $\pm 1\%$

Product Descriptions	External Dim. LxWxH (mm)	Weight (KG)	Static Load (Kg)	Dynamic Load (Kg)	Racking Load (Kg)	Units per container 40HC
MV-800 Solid Pallet	1200X800X150	12.5	6000	1800	600	572
MV-800 Perforated Pallet	1200X800X150	12.5	6000	1800	600	572
MV-800 Solid Reinforced Heavy Duty Racking Pallet	1200X800X150	17	6000	2000	1500	572
MV-1000 Solid Pallet	1200X1000X150	16.5	8000	2000	900	505
MV-1000 Perforated Pallet	1200X1000X150	16	8000	2000	900	505
MV-1000 Solid Reinforced Heavy Duty Racking Pallet	1200X1000X150	25	8000	2250	1750	505

- Solid or Perforated version available in any size
- Available in recycled material
- Available in PP material

- All loads refer to ambient temperature of 20° c.
- All loads refer to the weight evenly distributed throughout the whole pallet upper surface.
- "Static load" refers to a pallet placed on a flat and hard floor, where all the pallet feet bottom surfaces are in touch with the floor.
- "Dynamic load" refers to the pallet being raised by a standard forklift, where the forklift tines support across the length of the pallet.
- "Racking load" refers to a situation where the pallet is placed across the length on 2 parallel beams, while each 3 feet on one side are placed on each beam.
- When planning automated logistic centers you are required to contact Dolav experts.

**DOLAV®**

**Tried. Trusted. Best.**



Dolav Plastic Products, Kibbutz Dvir M.P. HaNegev 8533000

☎ 972-72-2450700 📠 972-8-9918710 ✉ dolav@dolav.com 🌐 www.dolav.com

Worldwide offices: Belgium, China, France, Germany, Hong Kong, Ireland, Israel, Italy, Russia, Spain, The Netherlands, UK, USA

